



CONSULTANT LUBRICANTS, INC.

"The Solution is Science"®

University of Missouri Research Park
9 Research Park Drive
St. Charles, MO 63304-5685

Consultant Lubricants, Inc. has been developing custom lubricant formulations and manufacturing advanced metalworking fluids for over forty years.

KM-500 Aluminum Extrusion Compound

"The Solution is Science"®



Top 4 Tube Extrusion Challenges... and the Solution! KM-500

- 1) Surface Cracking (splits) of Extruded Material** - KM-500 is treated to reduce friction at the die for a smooth interface with less adhesion to the die and less cracking.
- 2) Piping of Extruded Material** - KM-500 interfaces between the die and feedstock to reduce friction and resist a flow of impurities and oxides to the center of the product.
- 3) Internal Cracking of Extruded Material** - KM-500 reduces friction at the die with ceramic compounds to allow smooth flow to help resist internal cracking.
- 4) Surface Lines** - KM-500 additive selection addresses surface lines by filling in microscopic "valleys". This provides better surface finish and appearance of final product.

THE ADVENTURES OF GEORGE & RALPH

Ralph, How has your drawing been going?

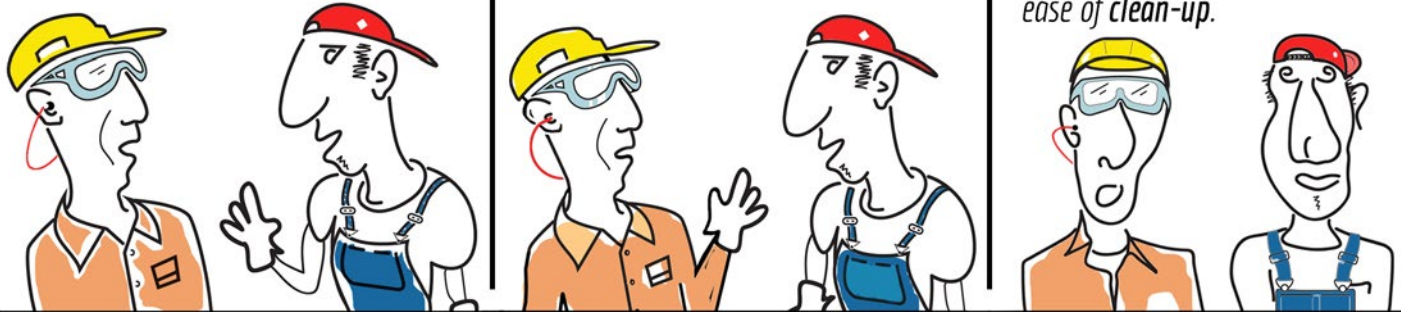
To tell you the truth, George, I broke my crayons.

I'm referring to our Aluminum Tube & Wire Drawing Operation!

Oh that. Awesome, since using CLI's lube in the die block.

Results have been easy drawing, excellent finish and ease of clean-up.

...no more falling into solvent tanks!



The KM-500 is a synthetic drawing compound developed in conjunction with aluminum tube and wire industry. It is designed to lubricate the die block when drawing aluminum tubing to smaller diameters. The KM-500 is completely stable and will not separate in the concentrate. It is recommended to be used in the concentrate form or diluted 1:1 for less severe drawing applications.

A unique benefit of the KM-500 is the ability to give complete lubrication in the die block resulting in easy of drawing as well as a clean bright finish. Since it is also water cleanable, it eliminates the need for solvent cleaning, therefore eliminating the hazards of open solvent wash tanks.

price per gallon

Call	For	Current	Pricing
1 GAL	5 GAL	55 GAL	275 GAL

p: 636-926-9903 f: 636-926-9727 clisyntec.com

